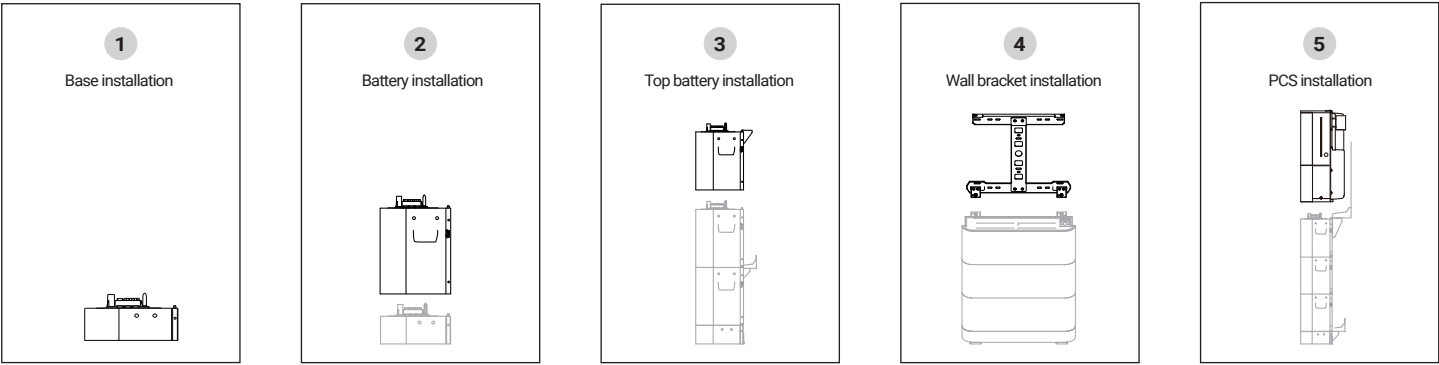


EP CUBE Quick Installation Guide V2.4 for authorized installer only!

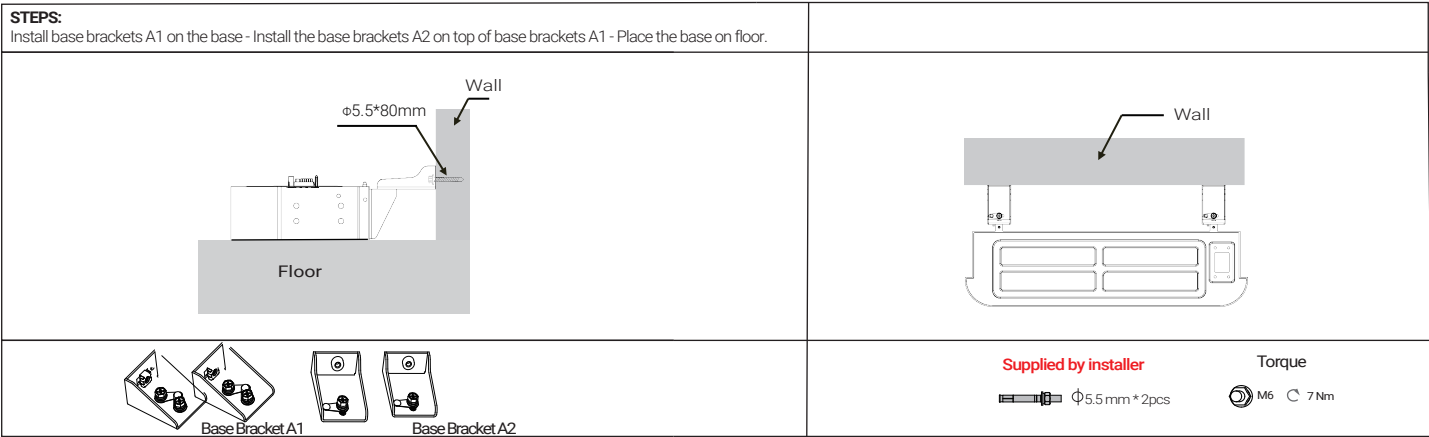
Handling and Installation - Two people recommended



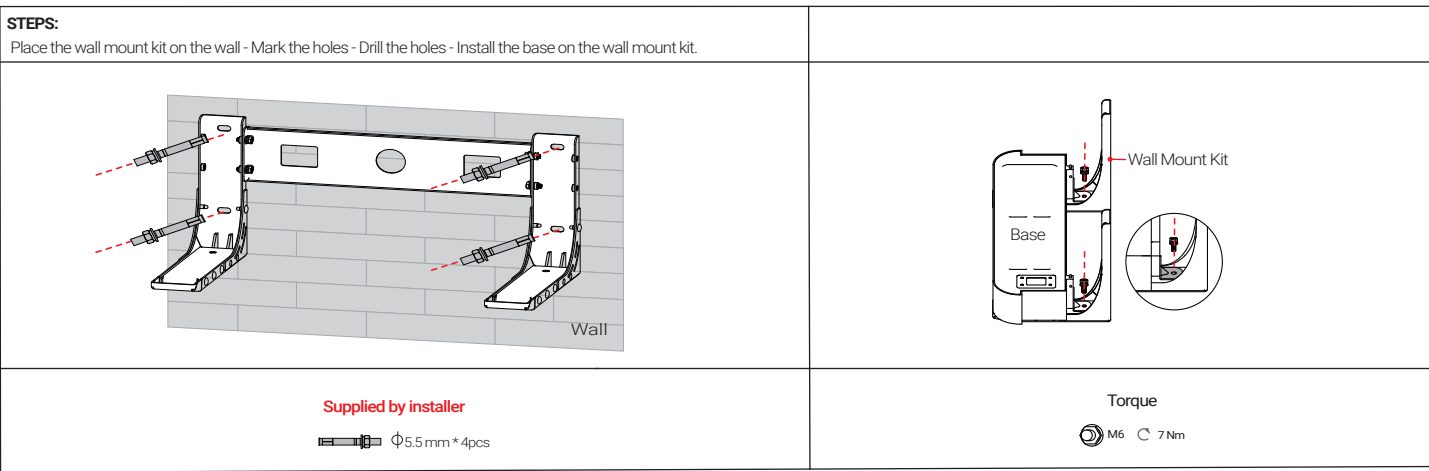
Installation Steps



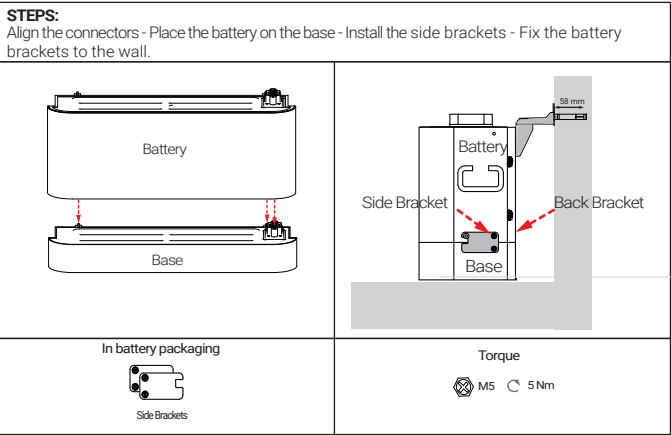
1.1 Base Installation on Wall (floor mounting)



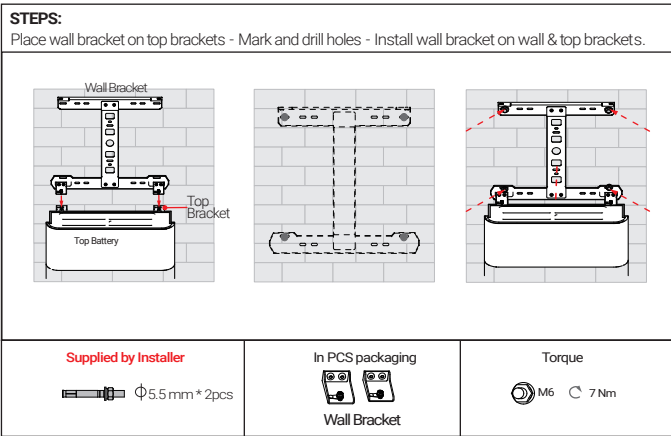
1.2 Base Installation (wall mounting - optional wall mount kit required)



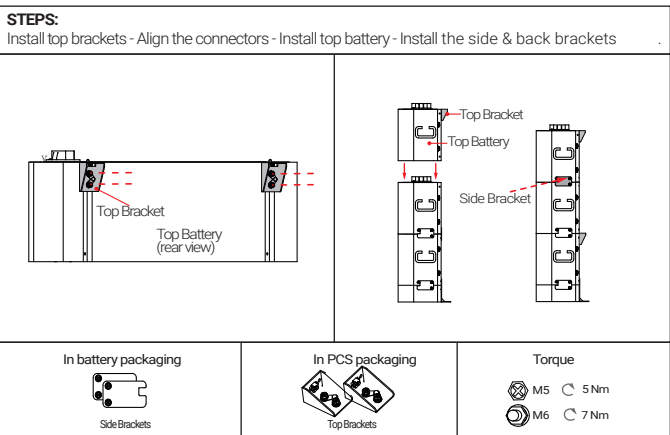
2. Battery and Base Installation



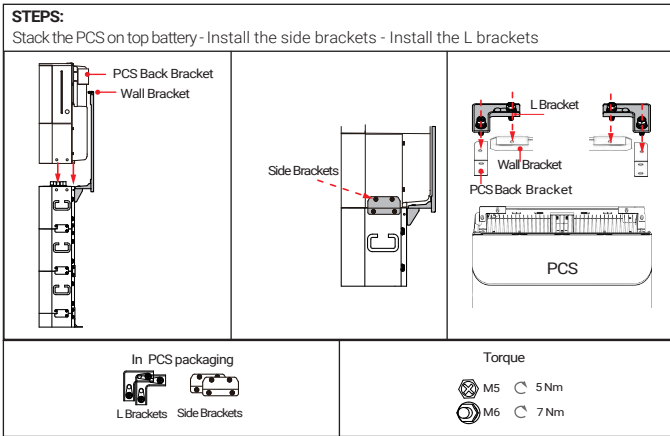
4. Wall bracket installation



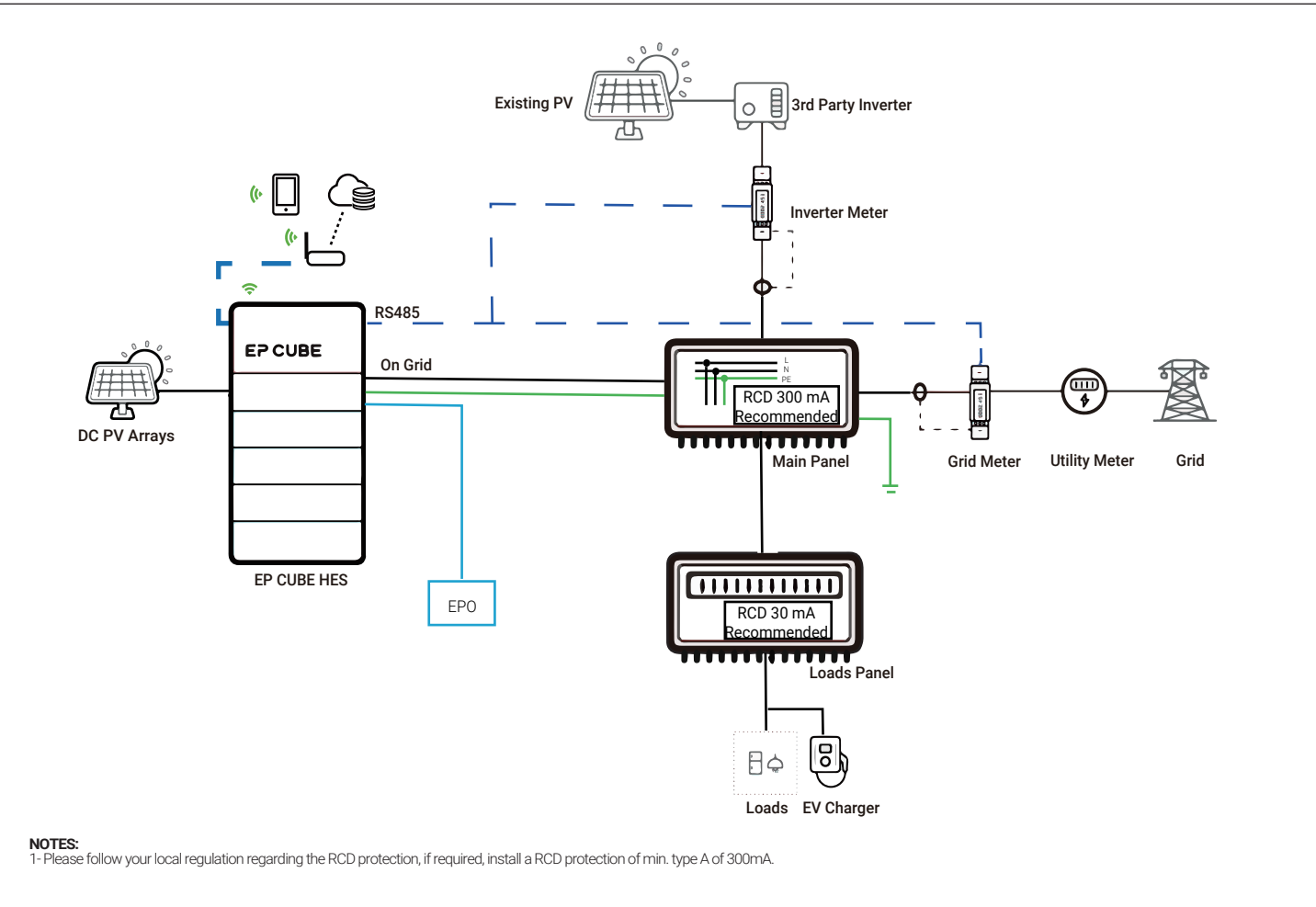
3. Top Battery Installation (Install the top brackets first)



5. PCS installation



Wiring Schematic Without Optional AC Switch Box



1. PV to EP Cube (It is recommended to install an external DC PV breaker between the EP Cube and the strings. Check string polarity with multimeter prior to connection).

In PCS Packaging

Devalan Connector Contact Pins (Female)	2 PCS
Devalan PV Connectors (Female)	2 PCS
Devalan Connector Contact Pins (Male)	2 PCS
Devalan PV Connectors (Male)	2 PCS
Devalan PV Connector Disassembly Tool	1 PCS

1 Crimp the male/female pins, but not the stopper.

2 Assemble the connectors.

3 Plug the connectors to the PCS

4 Lock the connectors.

EP CUBE

PV connector

2. Remove Front Panel and Dead Front Cover

STEPS:
Remove the front cover -Unfasten the screws on the dead front board.

EP CUBE

M4 Torque 4-5 Nm

3. PCS On-Grid to EP Cube AC Breaker

EP Cube AC Breaker

Grid

L N

Grid AC Breaker EP Cube AC Breaker

Utility Meter

Cable Gland

Cable Gland

Nut Seal Claw Body

L N PE

≥10 mm²

Terminals On PCBA

L N AC-Boost (Back-up) L N Grid

OT Terminal

OT Terminal

4. Emergency Stop Button (optional) - (Connect T1 to EPO+ of the PCS Terminal - Connect T2 to EPO - of the PCS Terminal).

EPO+ EPO- (Shielded twisted)

Signal Cable Gland

E-stop

T1 T2 "Closed" Terminal

PCS Terminal

EPO+ EPO-

Ensure that EPO Jumper is installed if E-stop is not installed.

EPO+ EPO-

E-Stop

Signal Cable Gland

PCS terminal

Meters Wiring (with Eastron Meter)

5. Single Phase Meter Voltage Connection (Note: If the meter with the PCS is ACREL Brand, then refer to the last page for meter wiring).

Main AC Breaker

Grid

L N PE ≥2.5 mm²

Existing Inverter Breaker

Inverter

L N PE ≥2.5 mm²

Grid meter

Voltage

N L

3 4

8 9 10

GND B- A+

1PH Meter

1 2

+ white - black

CT

Inverter meter

Voltage

N L

3 4

8 9 10

GND B- A+

1PH Meter

1 2

+ white - black

CT

Existing AC Inverter

Utility Meter

Main Electrical Panel

Main AC Breaker 3rd Party Inverter (if existing)

Grid Meter

Inverter Meter

6. CTs Installation (if there is an existing or new third party solar inverter, an inverter meter need to be installed to read inverter power production).

CT (5 m)

CT Orientation

Grid meter

Voltage

N L

3 4

8 9 10

GND B- A+

1PH Meter

1 2

+ white - black

CT

Inverter meter

Voltage

N L

3 4

8 9 10

GND B- A+

1PH Meter

1 2

+ white - black

CT

Existing AC Inverter

Utility Meter

Main Electrical Panel

Main AC Breaker 3rd Party Inverter (if existing)

Grid Meter

Inverter Meter

7. RS485 Signal Connection

RS485 Cable (10 m)

Grid meter

Voltage

N L

3 4

8 9 10

GND B- A+

1PH Meter

1 2

+ white - black

CT

Inverter meter

Voltage

N L

3 4

8 9 10

GND B- A+

1PH Meter

1 2

+ white - black

CT

Grid Meter

Inverter Meter

EP CUBE

RS485 Cable (Shielded twisted)

Signal Cable Gland

PCB terminal

8. Install Front Panel and Dead Front Cover

STEPS:
Place dead front board in place - fasten the screws on the deadfront board - install sealing ring and the PV switch.

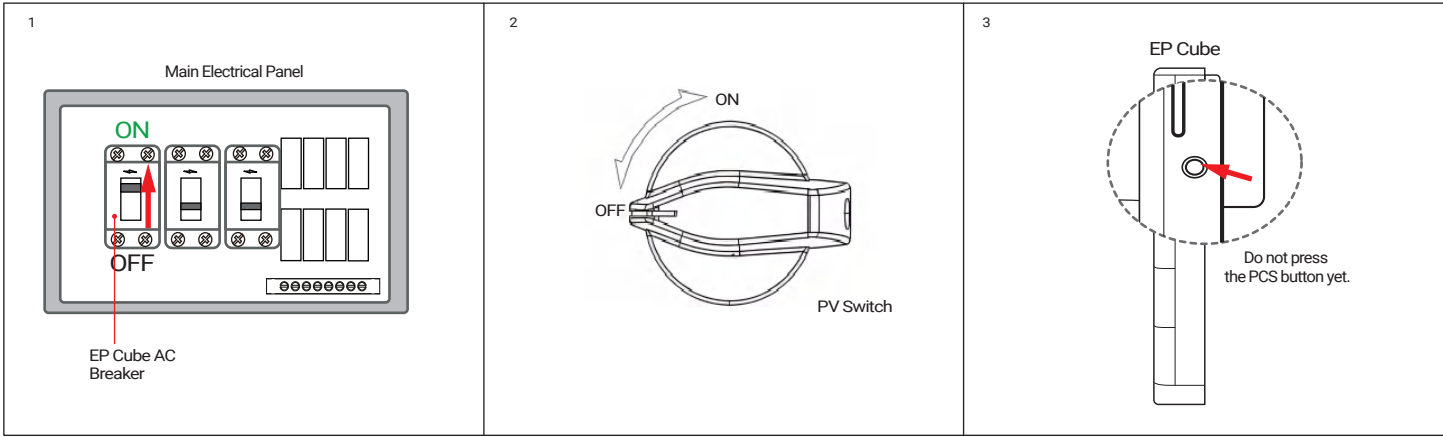
EP CUBE

M4 Torque 4-5 Nm

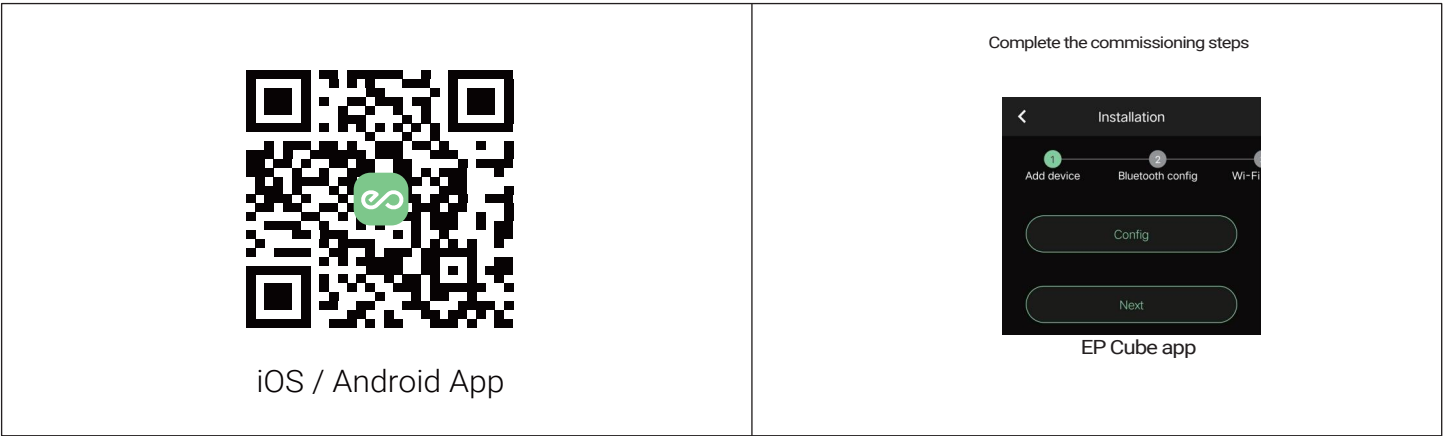
Torque 0.5-0.7 Nm

Commissioning via EP CUBE App

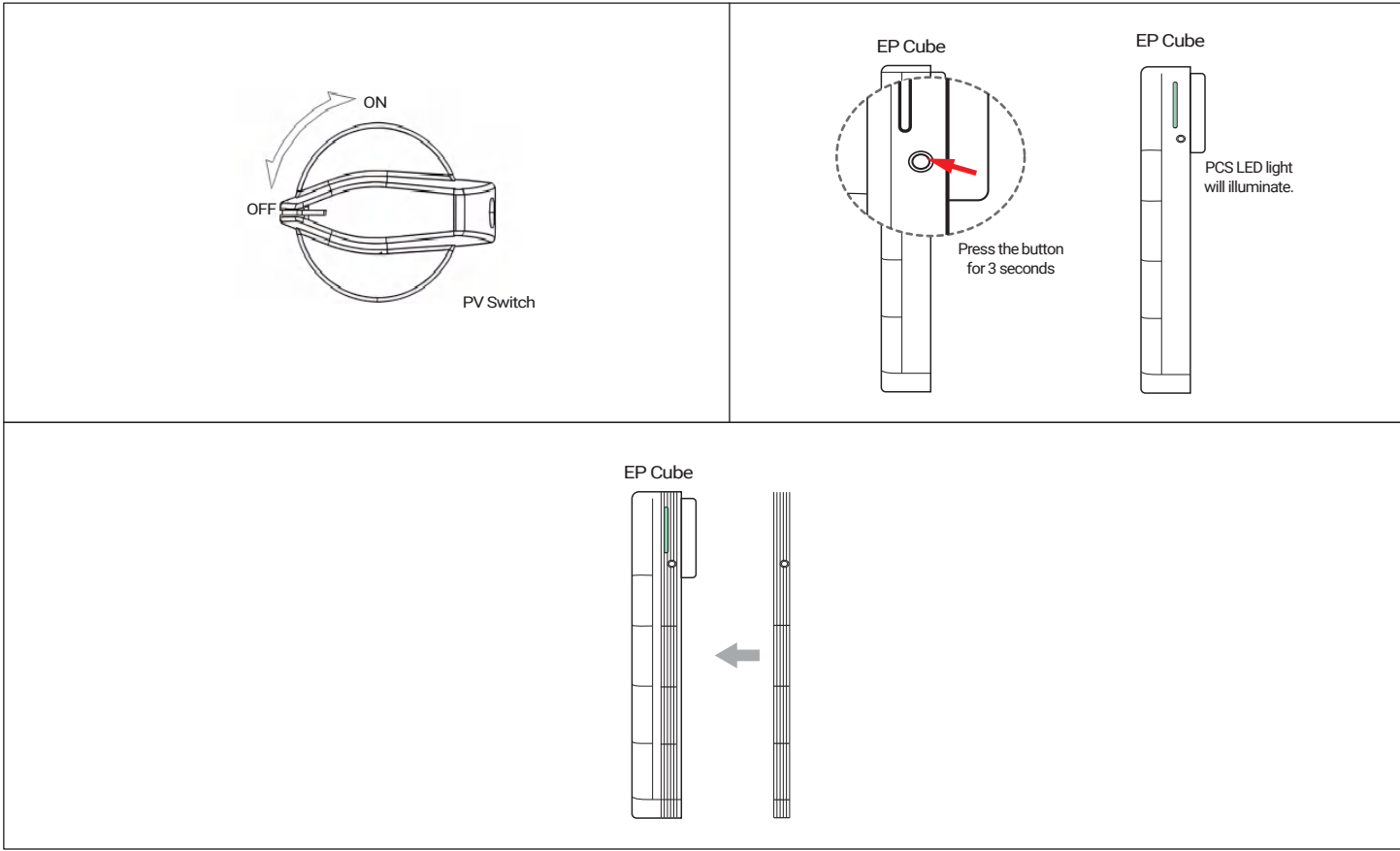
9. Power on EP CUBE, Operate EP CUBE in Standby for Commissioning (Turn on EP Cube AC Breaker - Ensure that PV Switch is off - Do not press PCS button.



10. Download the EP CUBE APP for Commissioning (Download - Log in to your installer account - "More" page - "New Installation")

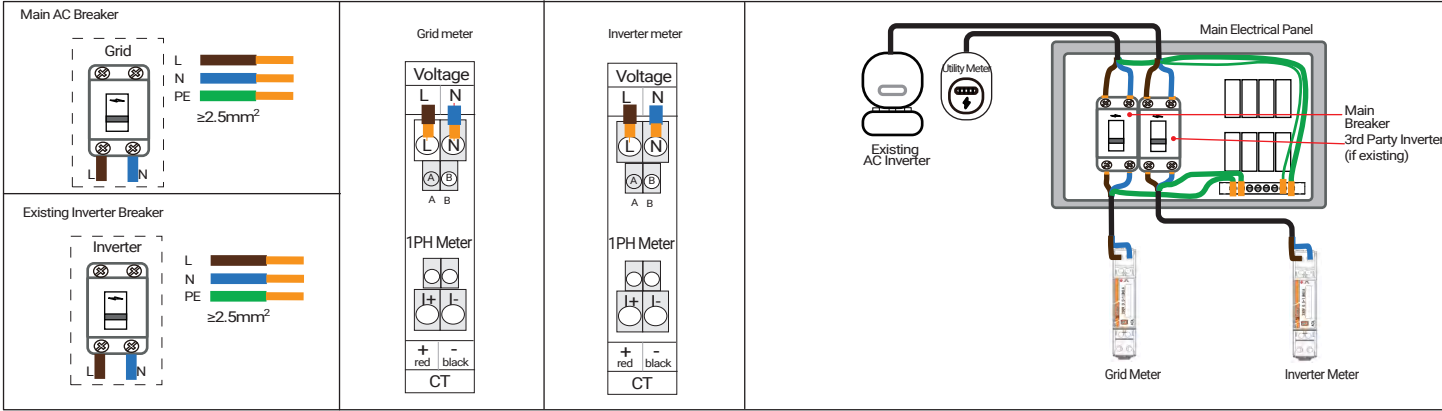


11. Activate EP CUBE (Turn on the PV switch - Press the button for 3 sec - Assemble the side covers)



Meters Wiring (with ACREL Meter)

5. Single Phase Meter Voltage Connection



6. RS485 Signal Connection

